

# What's New in Carmenta Map Builder 3.2

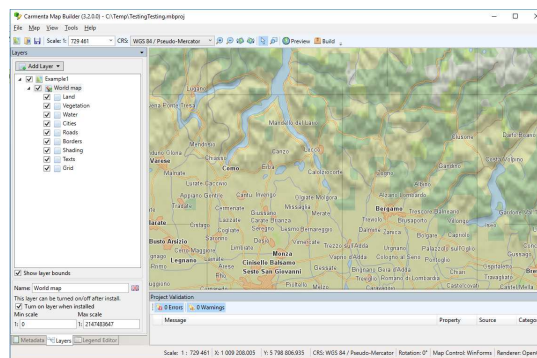
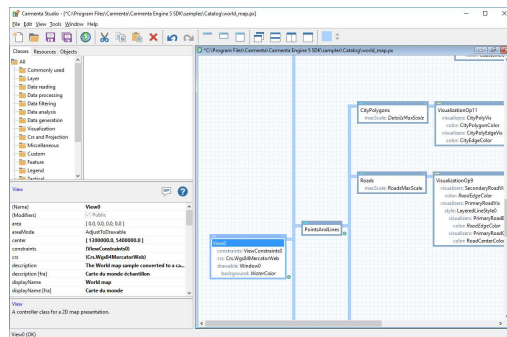
The new version makes it possible to add layers from map configuration files created in Carmenta Studio to the Map Builder project.

For a full list of features and improvements in this release, please refer to the release notes provided with the installation package.

## Using Existing Map Configuration Files

Carmenta Studio users now have the ability to use Carmenta Map Builder to package and deploy their maps.

Carmenta Map Builder projects can contain any combination of Carmenta Studio layers – imported from .px files – and layers created directly in Map Builder.



## Possibility to target a specific Carmenta Engine version

Users now have the ability to let the Map Builder project target a specific version of Carmenta Engine. This will cause Carmenta Map Builder to only use functionality that was available in this version.

Carmenta Map Builder 3.2 projects can target Carmenta Engine 5.5, 5.8 or 5.9.

## Preview in Carmenta Explorer

Carmenta Map Builder now lets the user preview the project in any Carmenta Explorer version that is installed on the computer.

This makes it easy to verify the behaviour of the map in the same version of Carmenta Engine that is used in the target system.

## Improved handling of Coordinate Reference Systems

Carmenta Map Builder now automatically sets a suitable recommended coordinate reference system for the project based on the data it contains.

It is also possible to configure additional coordinate reference systems that should be included in coordinate reference systems dropdowns.