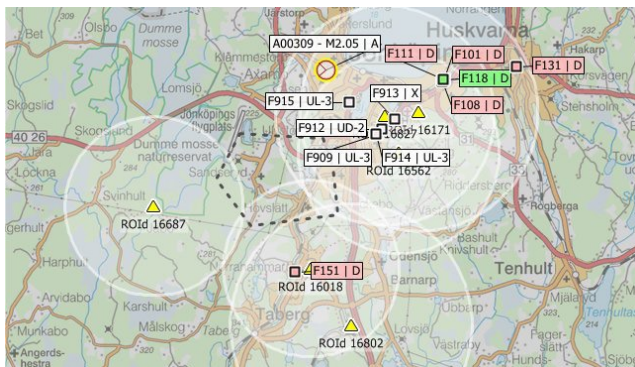


Carmenta ResQMap

Powerful GIS for public safety

ResQMap is a multi-user map display system that is designed to meet the needs of demanding rescue operations. ResQMap combines sophisticated features with a highly usable interface, in order to help operators locate callers and dispatch the right resources quickly and accurately.



Coordinating mission critical rescue operations, such as Emergency Dispatch and SAR – Search and Rescue – places special demands on the software tools that are used. The tools must provide the users with a comprehensive, up-to-the-second situation display, and response times must be very short.

ResQMap is a multi-user map display system that is designed to meet all requirements of demanding emergency response work. With ResQMap's blend of high-tech features and ease of use, the operators can find incident locations and direct resources rapidly and precisely.

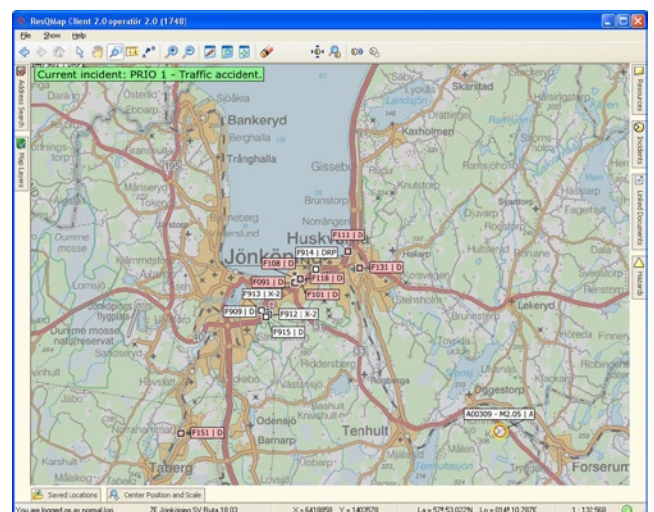
Map Display

ResQMap handles all types of GIS data, and the presentation is clear, concise and accurate. The size of the map window has been maximized by hiding all functions in easily accessible fold-out panels.

ResQMap can use any combination of raster images and vector data, and easily handles data in different coordinate systems. Updating the map display is very fast, even with large geographic databases.

ResQMap reads data from many sources, and GIS data can be stored in its original format (ESRI, MapInfo, AutoCAD etc.), thus avoiding time consuming data conversion.

The map display contains different layers of information, such as background, streets, buildings, fire hydrants and objects drawn by the users. The user profile determines what layers the user can view or edit.



Additional map features include:

- Configurable overview map window
- Flexible zoom and pan tools
- Distance measurement (US and Metric)
- Enhanced map display by using advanced filtering
- User defined drawing layers that can contain text, symbols, lines and areas
- Any type of document (blueprints, diagrams, photographs, web sites etc.) can be associated with a geographic location
- Real-time automatic label placement
- Background map dimming

