

# Carmenta Engine for Mission Planning Systems

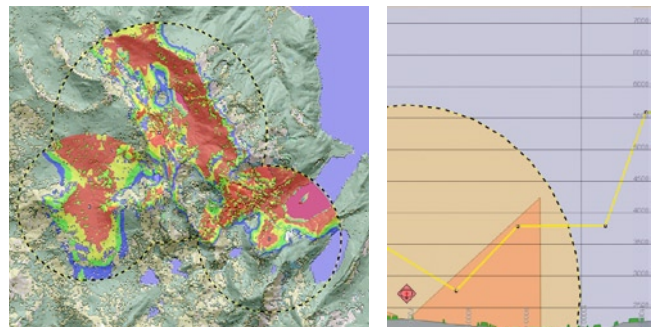
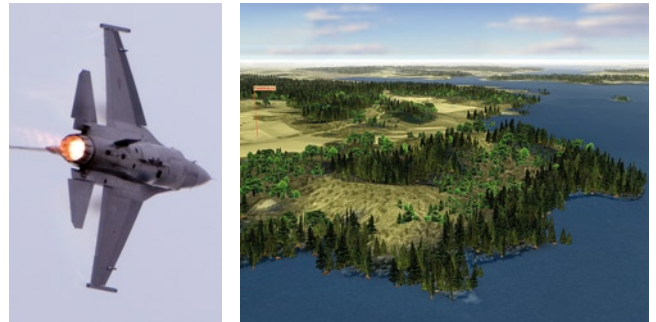
## Empower your MPS with geospatial technology designed from the ground up for Mission Critical Applications

Few systems are as demanding in their geospatial requirements as those designed for mission planning and support. To successfully plan a mission, the user not only needs access to a lot of up-to-the-minute information, but also to a variety of different geospatial data sources. Building a system that merges all of this information in a way that makes it easy for the user to analyze and act upon can be a real challenge.

Since starting Carmenta Engine development more than ten years ago, Carmenta has been committed to providing the best possible tool for these kinds of system. With extensive experience as a Scandinavian defense contractor, we have created a system that is jam-packed with features that are invaluable for MPS developers. Today, Carmenta technology is empowering mission planning systems from market-leading vendors all over Europe.

### Benefits when using Carmenta Engine for Mission Planning Systems

- Outstanding support for geographical data formats. Of special interest for mission planning systems is the native, high-performance reader for ARINC-424 databases, as well as the support for military formats such as CADRG, ASRP and VPF. To avoid cumbersome conversions, all data is read in its native format.
- Sophisticated visualization functionality. Enroute navigational data, e.g. from ARINC or DAFIF data, can be visualized on-the-fly in a way which is almost indistinguishable from a “handcrafted” paper map. You can combine different data sources any way you like. Use DTED1 data to add a subtle semi-transparent hill-shading effect, or add a high-resolution satellite image in the background.
- Components for high-performance line-of-sight analysis. The analysis can be tied to any object in the map, and will be automatically updated whenever the object moves. Very useful when planning a route that needs to avoid threats.
- Generate detailed vertical profiles. The vertical profile, which is generated on-the-fly from any elevation data, can include other geographical features such as restrictive airspaces, targets and threats, with their associated line-of-sight.



- Full support for tactical symbology according to MIL-STD-2525B via the Tactical Display Tools package. The package allows the end user to create, import and display tactical scenarios.
- Generate realistic 3D views on-the-fly. A 3D fly-through of the mission is valuable for rehearsal purposes. Any 2D data source can also be seamlessly used in 3D.
- ADatP-3 message handling. Message information can be viewed and changed in the map as well as in message forms. Messages can also be imported and exported to MTF files. It is possible to work with multiple ADatP-3 baselines simultaneously.

For further information, please refer to the Carmenta Engine brochure, or contact Carmenta.